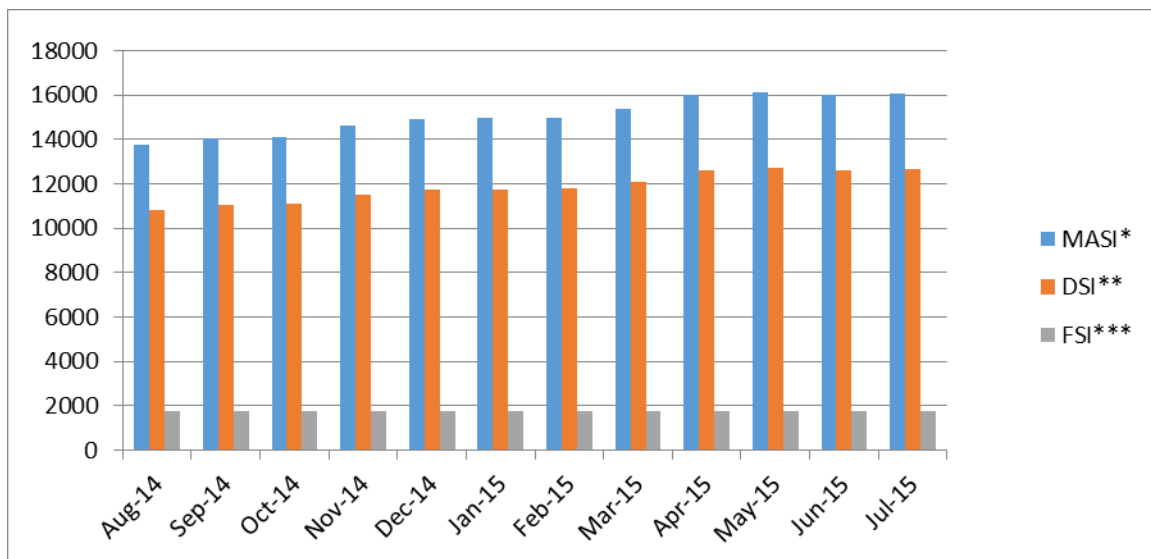




MALAWI STOCK EXCHANGE

MONTHLY MARKET REPORT

JULY 2015



MALAWI STOCK EXCHANGE

OLD RESERVE BANK BUILDING, VICTORIA AVENUE
PRIVATE BAG 270
BLANTYRE

TEL. (265) 01 824 233

FAX. (265) 01 823 636

E-mail. mse@mse-mw.com

WEBSITE. www.mse.co.mw

MALAWI STOCK EXCHANGE LIMITED

MONTHLY MARKET PERFORMANCE REPORT FOR JULY 2015

1.0 TRADING SUMMARY

The Market recorded a positive monthly return on the index of **0.28%** (**-13.60%** in US\$ terms).

There were no trades on the three government bonds whilst Equity trading decreased in both traded value and volume compared to June 2015.

Index Levels and Return – JULY 2015

INDEX	July 2014	June 2015	July 2015	Monthly % Δ	YTD % Δ
MASI	13539.39	16011.65	16056.99	0.283 ▲	7.87 ▲
DSI	10650.54	12615.53	12651.59	0.286 ▲	7.95 ▲
FSI	1740.76	1762.13	1762.13	0.00 ■	0.14 ▲

Trading Statistics – JULY 2015

	JULY 2015		JUNE 2015	% Δ
Traded Value (MK)	202,182,349.16		289,322,167.98	30.12 ▼
Traded Value (US\$)	428,747.79		660,960.52	35.13 ▼
Traded Vol. Shares	14,086,929		16,582,284	15.05 ▼
No. of Transactions	91		100	9.00 ▼
Index Close (MASI)	16056.99		16011.65	0.283 ▲
Index Close (DSI)	12651.59		12615.53	0.286 ▲
Listed companies	14		14	
Traded Companies	14		14	
Not Traded Companies	00		00	
Gainers	04		04	
Decliners	01		01	
Unchanged	09		09	

2.0 MARKET PERFORMANCE

2.1 Trade Performance Analysis

From 1st July to 31st July, 2015 a total of 14,086,929 [22,543,583 in July 2014] shares were transacted at a total consideration of MK202,182,349.16(US\$428,747.79)[MK1,095,881,895.05(US\$2,742,404.82) in

July 2014] in 91 trades. In the previous month, June 2015, the market transacted a total of 16,582,284 shares at a total consideration of MK289,322,167.98 (US\$660,960.52) in 100 trades. This reflects a **-15.05%** decrease in terms of share volume and **-30.12%** (**-35.13%** in US Dollar terms) decrease in share value.

The market registered an average daily volume of 670,806 shares in July 2015 compared to 789,633 shares in June 2015.

The average daily turnover for July 2015 was MK9,627,730.91 (US\$20,416.56) compared to MK13,777,246.09 (US\$31,474.31) for the previous month, reflecting a decrease of **-30.12%** (**-35.13%** in US Dollar terms).

TABLE 1: TRADING SUMMARY FOR JUNE 2015 – JULY 2015

DATE	VOLUME	VALUE (MWK)	VALUE (US\$)
June	16,582,284	289,322,167.98	660,960.52
July	14,086,929	202,182,349.16	428,747.79
% CHANGE	15.05 ▼	30.12 ▼	35.13 ▼

2.2 Market Capitalisation and Index

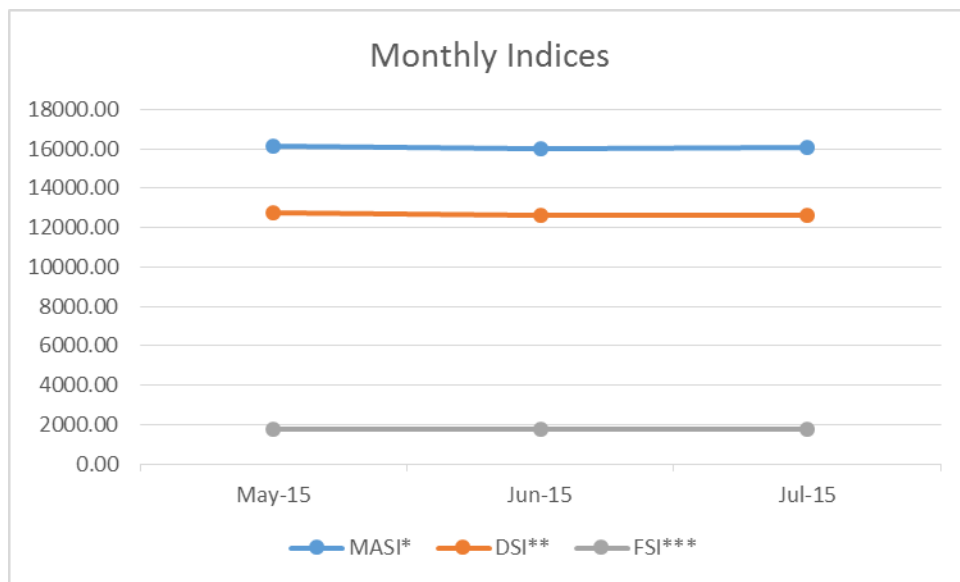
The market registered a positive return on index as reflected in the upward movement of the Malawi All Share Index (MASI) from 16011.65 points registered on 30th June 2015 to 16056.99 points registered on 31st July 2015, giving a monthly return on index of 0.28%, (**-13.60%** in US\$ terms). The price gains registered by four counters, BHL, MPICO, NITL and SUNBIRD were enough to offset a share price loss registered in ILLOVO resulting into an increase in the Domestic Share Index by 0.29% (**-13.60%** in US\$ terms) from 12615.53 points to 12651.59 points. The Foreign Share Index closed flat at 1762.13 points.

Table 2: Market Capitalization and Index – July 2015

Month Ending	Mkt. Cap. MKm.	Mkt. Cap. US\$m	Mkt. Cap. MKm*	Mkt. Cap. US\$m*	MASI
June	7,584,023.99	17,181.4298	684,022.31	1,549.6366	16011.65
July	7,585,960.96	14,806.7779	685,959.28	1,338.9005	16056.99

* Excludes non-Malawi register Old Mutual plc shares

FIG 1: MSE INDICES – July 2015



2.3 Market Liquidity

The turnover velocity measured by the ratio of Total Value of Trades to Market Capitalisation (**TVT/MCAP***) in July was recorded at 0.03% compared to 0.04% registered in the previous month. The ratio of Total Value of Trades to Gross Domestic Product (**TVT/GDP**) recorded a liquidity level of 0.01% in June and July.

Table 3: Market Liquidity – July 2015

MONTH Ended	Mkt. Cap/GDP %	Mkt. Cap/GDP* %	TVT/GDP %	TVT/Mkt. Cap* %	Shares Traded/Shares In Issue* %
June	244.79	22.078	0.00934	0.0423	0.094153
July	244.85	22.141	0.00653	0.0295	0.079984

* Excludes non-Malawi register Old Mutual plc shares

2.4 Company Trading Performance

Top Gainers

MSE CODE	COUNTER NAME	% GAIN
SUNBIRD	Sunbird Tourism Limited	105.26
NITL	National Investment Trust Limited	20.00
MPICO	MPICO Limited	18.84
BHL	Blantyre Hotels Limited	17.79

Four counters registered a capital gain in July 2015.

Top Decliners

MSE CODE	COUNTER NAME	% LOSS
ILLOVO	Illovo Sugar Malawi	-1.77

One counter registered a capital loss in July 2015.

Top Four Traded Stocks by Volume- July 2015

MSE CODE	COUNTER NAME	SHARES	% OF TOTAL
TNM	TNM	10,490,610	74.47
NBS	NBS Bank	1,503,496	10.67
MPICO	MPICO Limited	968,770	6.88
NICO	NICO Holdings Limited	525,650	3.73

Top Four Traded Stocks by Value- July 2015

MSE CODE	COUNTER NAME	MK	% OF TOTAL
TNM	TNM	72,209,176.86	35.71
NBS	NBS Bank	46,608,376.00	23.05
OML	Old Mutual plc	17,365,172.00	8.59
NICO	NICO Holdings Limited	15,769,500.00	7.80

Company Trading Statistics- July 2015

Company	Opening Price	Closing Price	% Price Change	Share Vol. Traded	Value Traded MK
BHL	815	960	17.79%	31,000	284,260.00
FMB	1900	1900	0.00%	45,000	855,000.00
ILLOVO	29420	28900	-1.77%	20,000	5,810,000.00
MPICO	690	820	18.84%	968,770	7,360,114.85
NBM	25100	25100	0.00%	27,414	6,880,914.00
NBS	3100	3100	0.00%	1,503,496	46,608,376.00
NICO	3000	3000	0.00%	525,650	15,769,500.00
NITL	5000	6000	20.00%	149,034	9,229,800.00
PCL	51615	51615	0.00%	5,913	3,051,994.95
REAL	230	230	0.00%	82,170	188,991.00
STANDARD BANK	43500	43500	0.00%	29,295	12,743,325.00
SUNBIRD	950	1950	105.26%	196,191	3,825,724.50
TNM	690	690	0.00%	10,490,610	72,209,176.86
OML	140200	140200	0.00%	12,386	17,365,172.00
				14,086,929	202,182,349.16

3.0 ECONOMIC POSITION

- 3.1 The Malawi Kwacha depreciated against all major trading currencies between 30th June and 31st July, 2015 as shown in Table 4 below;

TABLE 4: MONTHLY EXCHANGE RATES: JUNE 2015-JULY 2015

CURRENCY	END JUN' 2015	END JUL' 2015	% CHANGE
MK/US Dollar	441.4082	512.3303	-13.84%
MK/GBP	693.7066	806.8248	-14.02%
MK/ZAR	35.9586	41.2620	-12.85%
MK/EUR	491.4486	569.6798	-13.73%

Source: National Bank of Malawi

- 3.2 The year on year headline inflation stood at 21.3% in June 2015 up by 1.8%. The urban and rural inflation rates for the month of June 2015 were 18.5% and 24.1% respectively.
- 3.3 Key economic indicators for July 2015

	July 2014	June 2015	July 2015
Inflation Rate	22.5	21.3	21.3(June)
Policy Rate	22.5	25.0	25.0
Prime Rate	33.5	37.0	32.0
91 Days T-Bill	16.81	24.77	
182 Days T-Bill	17.85	24.91	
364 Days T-Bill	17.89	25.14	24.24
Import Cover(Months)	2.53	3.45	3.53

Source: Reserve Bank of Malawi, National Bank of Malawi and National Statistical Office